

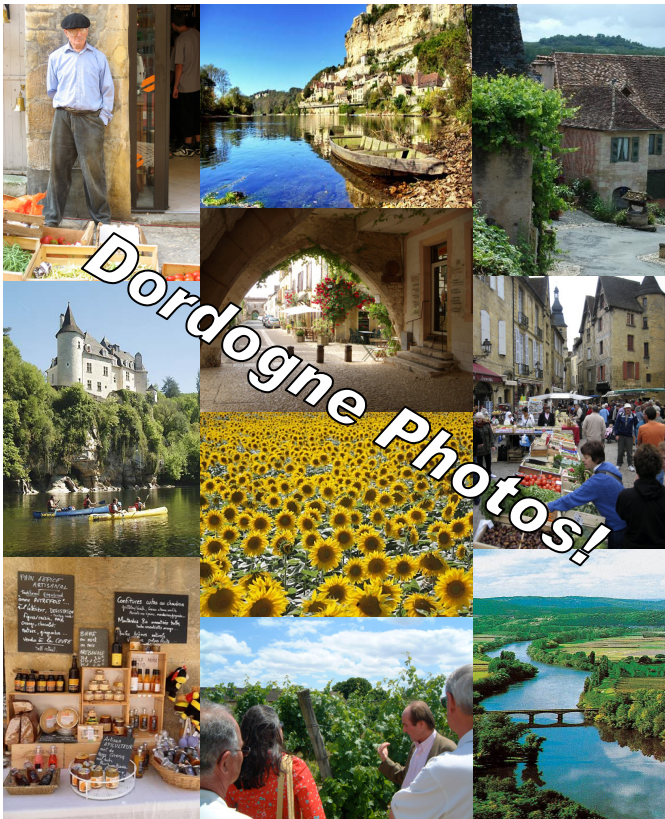
# Kate Bentley

16—23 June 2012



Kate Bentley is a professional, award winning artist and also a popular tutor with broad experience of teaching. She regularly demonstrates/teaches in adult education, art societies, and on private courses. Known to be generous with her knowledge and pleased to be able to pass on her skills, Kate looks forward to enhancing your whole holiday experience with a relaxing, but informative week. Kate's work has been shown in a number of respected venues including The Royal Institute of Watercolour Artists, The Royal Watercolour Society, The Affordable Arts Fair, The Society of Women Artists, The Lakes Artists Society and The Royal Birmingham Society of Arts.

[www.katebentley.co.uk](http://www.katebentley.co.uk)



# Prices & Details

8 Days / 7 Nights

Full-board accommodation in ensuite room & all local transportation

Professional art tuition throughout

Day trips to beautiful painting locations

Gourmet dining, regional dishes & wine with dinner included

Light weight easels, sun umbrellas, chairs and boards provided

**£1,195\***

*\*free airport transfer on selected flights only*

No single room supplements

£200 discount for non painting partners

Direct flights from 8 UK airports to Bergerac Dordogne Périgord Airport

(flights not included)



4 Park Parade, Whitley Bay, Tyne & Wear, NE26 1DX, UK.

phone: (UK) 07890 602 571

email: [info@bellasardinia.com](mailto:info@bellasardinia.com)

[www.bellasardinia.com](http://www.bellasardinia.com)



# The Dordogne

*"explore this beautiful region"*



**Kate Bentley**

**16—23 June 2012**

*relaxing painting holidays*

GREECE • ITALY • FRANCE

**2012**

# About The Dordogne



The Dordogne region of southwest France is one of the most beautiful and popular destinations in the country. Visit this beautiful region of France and discover the chateaux, beautiful medieval towns and villages, unspoiled countryside

and prehistoric caves - just some of the many reasons why the region attracts so many visitors.



A traditional lifestyle still prevails in the Dordogne – market day is still the most important time of the week for many locals, when they can catch up on all the village news whilst they do their shopping.

You will be afforded a warm welcome into the local way of life, and offering a friendly ‘bonjour’ to the neighbours will really help you feel like part of the community. Explore this region with us!



## The Dordogne Weather Chart

Late June / early July is a beautiful time of year to visit the region. The weather is almost always warm but not as hot as high summer.



Temperature °C (High) / Sun Hours

## Flying from the UK to The Dordogne

With direct flights to Bergerac Dordogne Périgord airport with Jet2, Ryanair and Flybe departing from 8 UK airports booking a painting holiday in this beautiful and popular destination has never been easier.

# La Maison d'Aliénor

Your home is La Maison d'Aliénor—an elegantly restored 18th century farmhouse nestled in the southwest corner of France's Perigord region (Dordogne). When you are here, the property is ours alone. The farmhouse sits amidst rows of grapevines and fields of sunflowers, just minutes, by car, from bustling Eymet, a 12th century bastide town with bistros, boulangeries and a lively, weekly Farmers Market! Also at our disposal is a purpose built Atelier/Studio.



## La Maison d'Alienor



The 18th century farmhouse with its two story pigeonier was built well before the French revolution and has been thoughtfully restored and renovated. To the right of the farmhouse is the grange which has also been completely renovated.



Each guest room has been decorated with country French fabrics and furniture. The bathrooms have large walk-in showers and ample sink counter space and each bathroom has a hair dryer. Outdoors, in the garden, are several terraces and a 5 metre by 15 metre swimming pool.



“I think I have found heaven! Memories of places I only have dreamed of. Thank you for your hospitality.”

Judie Gray

“I shall cherish my memories of the Maison d'Aliénor”

Fran Bell Simms

“The second time around was just as wonderful as the first. Many thanks.”

Jane Jordan

# Painting Locations

In addition to painting at the Maison and in the nearby Bastide of Eymet we will also go on trips to the market town of Bergerac, the Bastide town of Monpazier, Monbazillac chateau and Limeuil on the Dordogne.

**Bergerac**, often called the gateway to the Perigord is a quaint French market town nestled within the southwest wine producing region of Dordogne upon the Dordogne River. It is home to many famous wine producers and is also known for its tobacco industry.



**Monpazier**, has been elected "un des plus beaux villages de France" one of the most beautiful bastide towns of France and, as well as being the best preserved bastide in the Dordogne, it is considered the most typical example of a

bastide in the entire south-west of France.

**Monbazillac**, built in the mid-sixteenth century, the chateau is situated in the heart of the prestigious Monbazillac vineyards. The famous wine can be tasted at the Visitor's Centre.



**Limeuil** was classified as "One of the Most Beautiful Villages of France" in 1990, the extraordinary medieval village of Limeuil proudly takes its place as one of the jewels of the Périgord.

Standing on its rocky promontory at the confluence of the two rivers, the Dordogne and the Vézère, Limeuil invites you to experience the tranquillity of this area of outstanding natural beauty.